



# FUJI ELEVATOR

## PROFILE

2022

China-Japan Joint Ventures

# FUJI ELEVATOR PROFILE - 2022

1. ABOUT FUJI
2. WHAT FUJI MAKE
3. SERVICE EXCELLENCE
4. QUALITY CONTROL
5. FUJI FACTORY
6. FUJI DESIGNS
7. PROJECTS

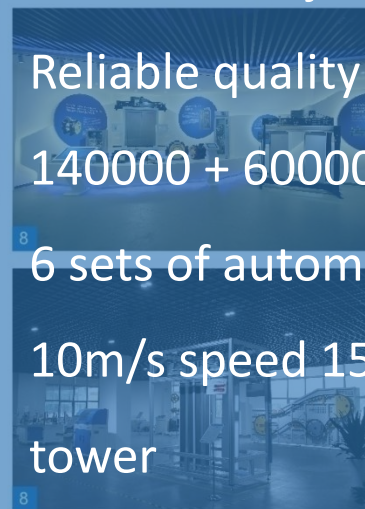


# International Top Equipments



## 1. ABOUT FUJI

- The Largest FUJI Elevator factory in the world
- 30 Years abundant problem solving experience
- Advanced Fuji control technology
- Reliable quality and superior service
- 140000 + 60000 square meters Plant
- 6 sets of automatic production line
- 10m/s speed 150 meters high elevator testing tower
- 50000 sets annual output





## 2. WHAT FUJI MAKE

### Solution for different requirement



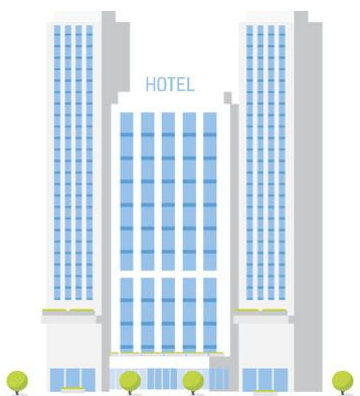
Residence



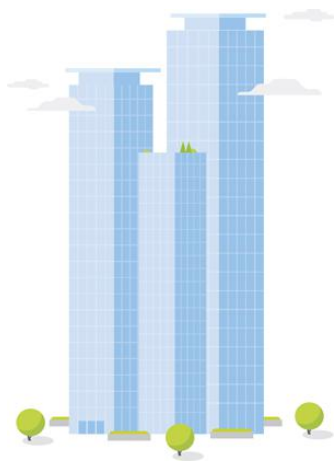
Commercial Building



Relaxation education, special buildings



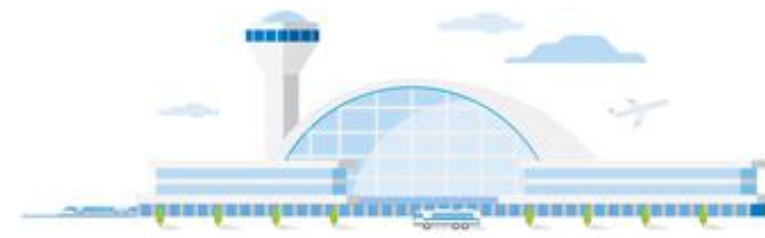
Hotel



Office



Hospital



Public transportation

# Products

Efficient and energy-saving driving system



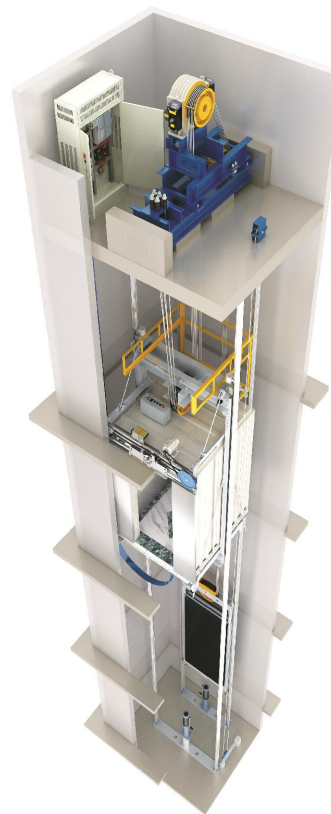
FUJI Escalator / Moving Walks



FUJI Small Machine Room Elevator



FUJI Machine Roomless Elevator



FUJI Freight Elevator



FUJI Scenic Elevator





# 3. SERVICE EXCELLENCE

## Solution for the whole lifecycle

### 1. Design and produce

- Project Planning
- Design solution
- Produce

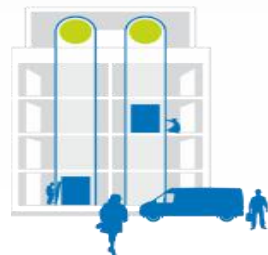


### 2. Installation

- Project management
- Installation method.

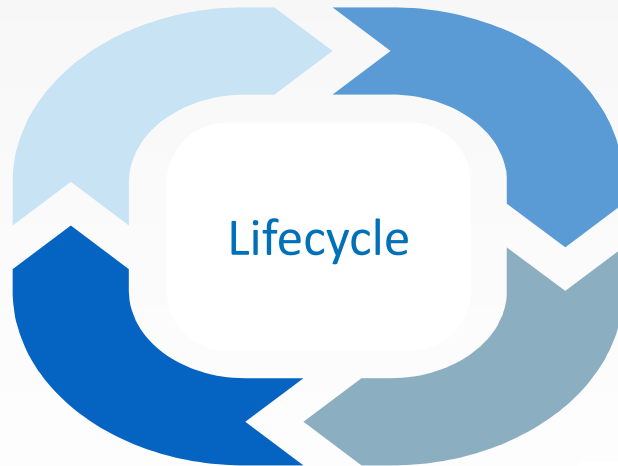
### 4. Renewal

- Initial evaluation
- Solution



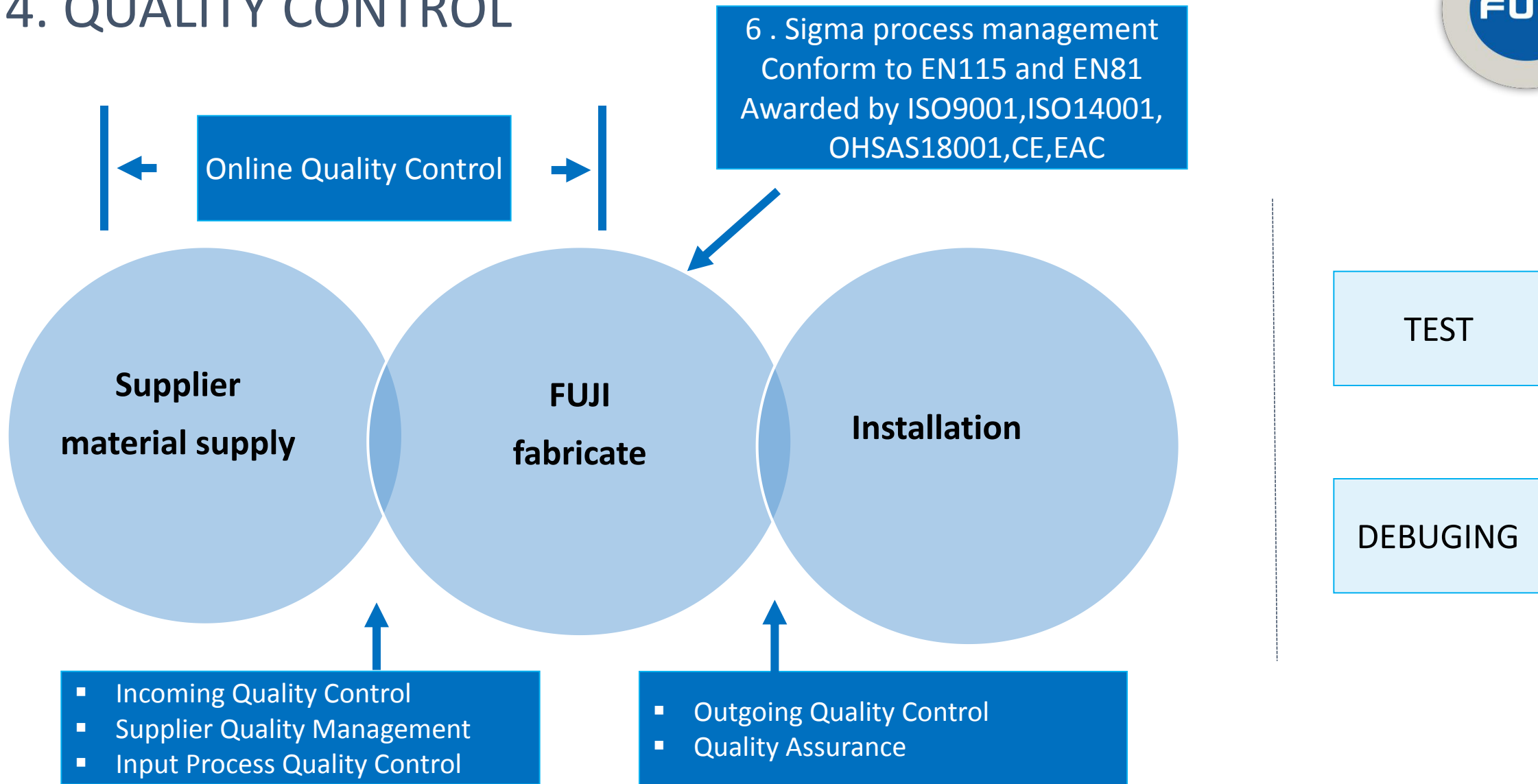
### 3. Maintenance plan

- Technical assistance
- Spare Parts support





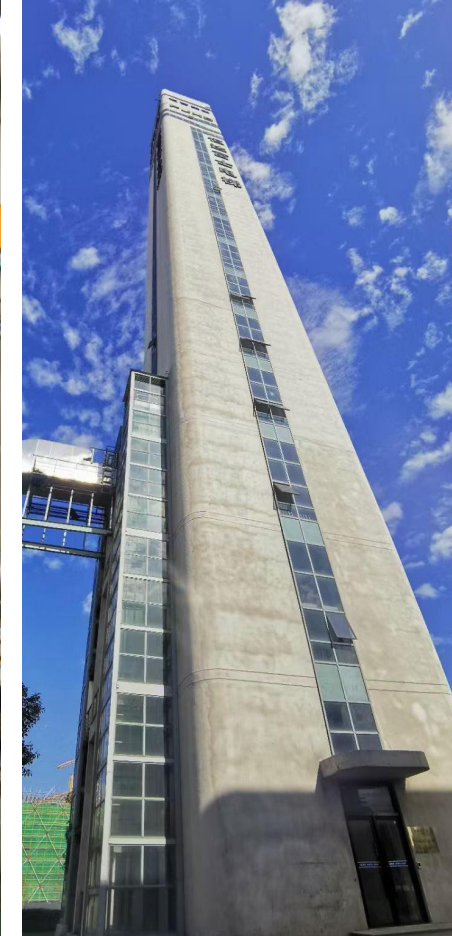
# 4. QUALITY CONTROL





## 5. FUJI FACTORY PROFILE

From end of 2016, the 4th plant is activated, this plant have total investment of USD130 million, which including 80,000 square meters of workshop and 18,000 square meters of office, equipped the advanced Germanic and Italian full-automatic metal plate production equipment.

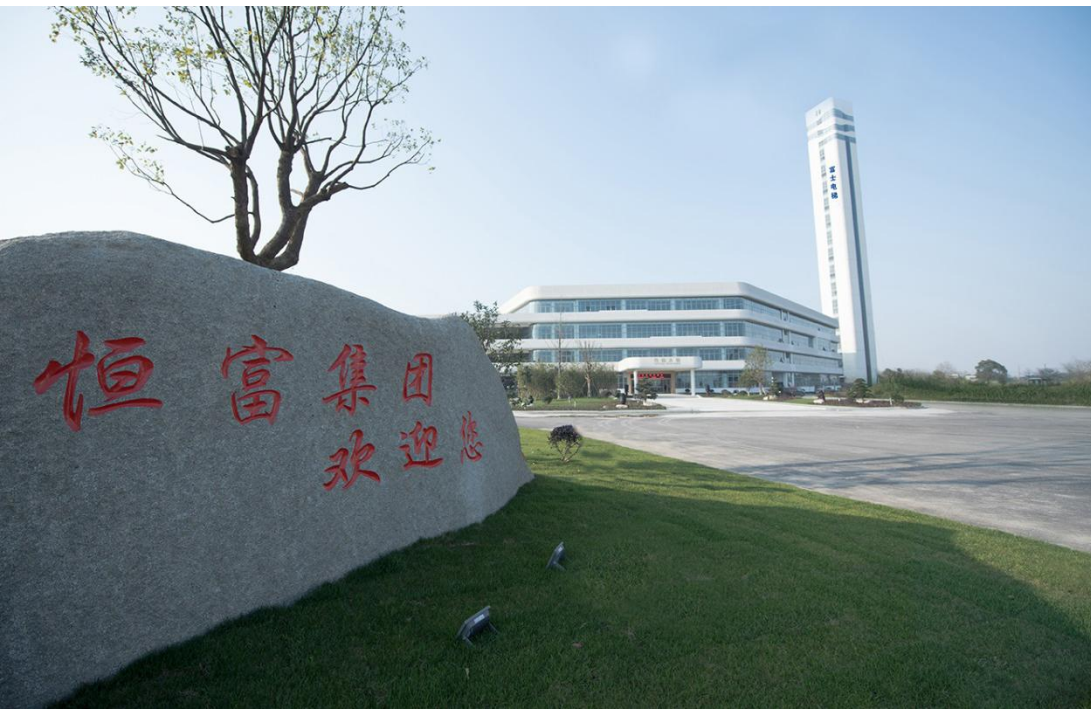






## 5. FUJI FACTORY PROFILE

From end of 2016, the 4th plant is activated, this plant have total investment of USD130 million, which including 80,000 square meters of workshop and 18,000 square meters of office, equipped the advanced Germanic and Italian full-automatic metal plate production equipment.





Cabin  
Production  
Line



Cabin

Production

Line





Doors

Production

Line



FUJI Motors



Escalator

Moving  
walks

Production

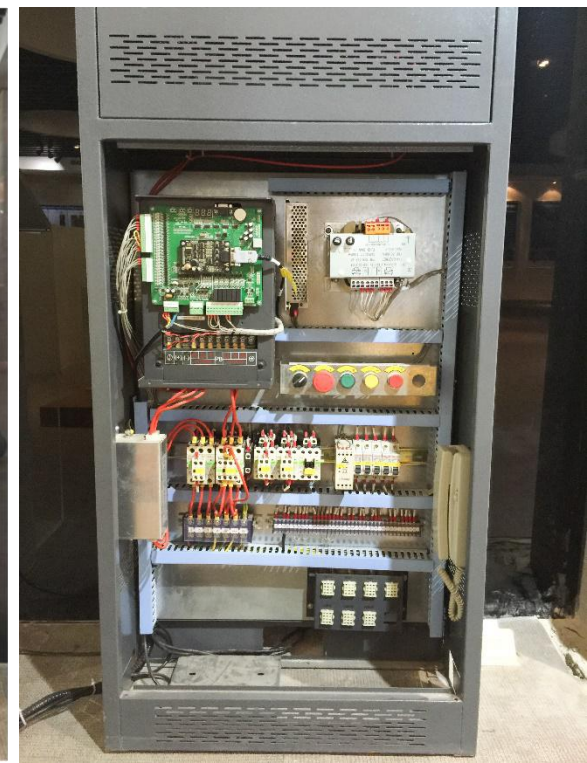
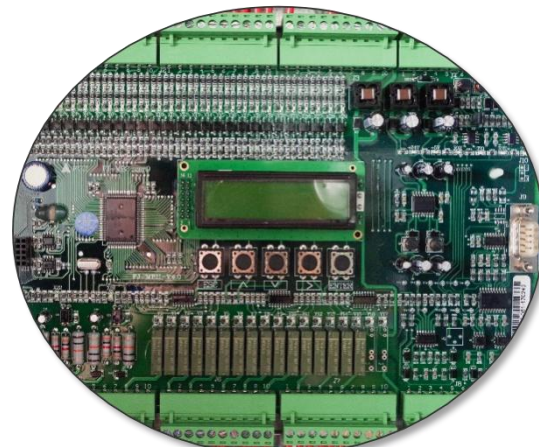
Line



# Electric assembly workshop



FUJI inverter



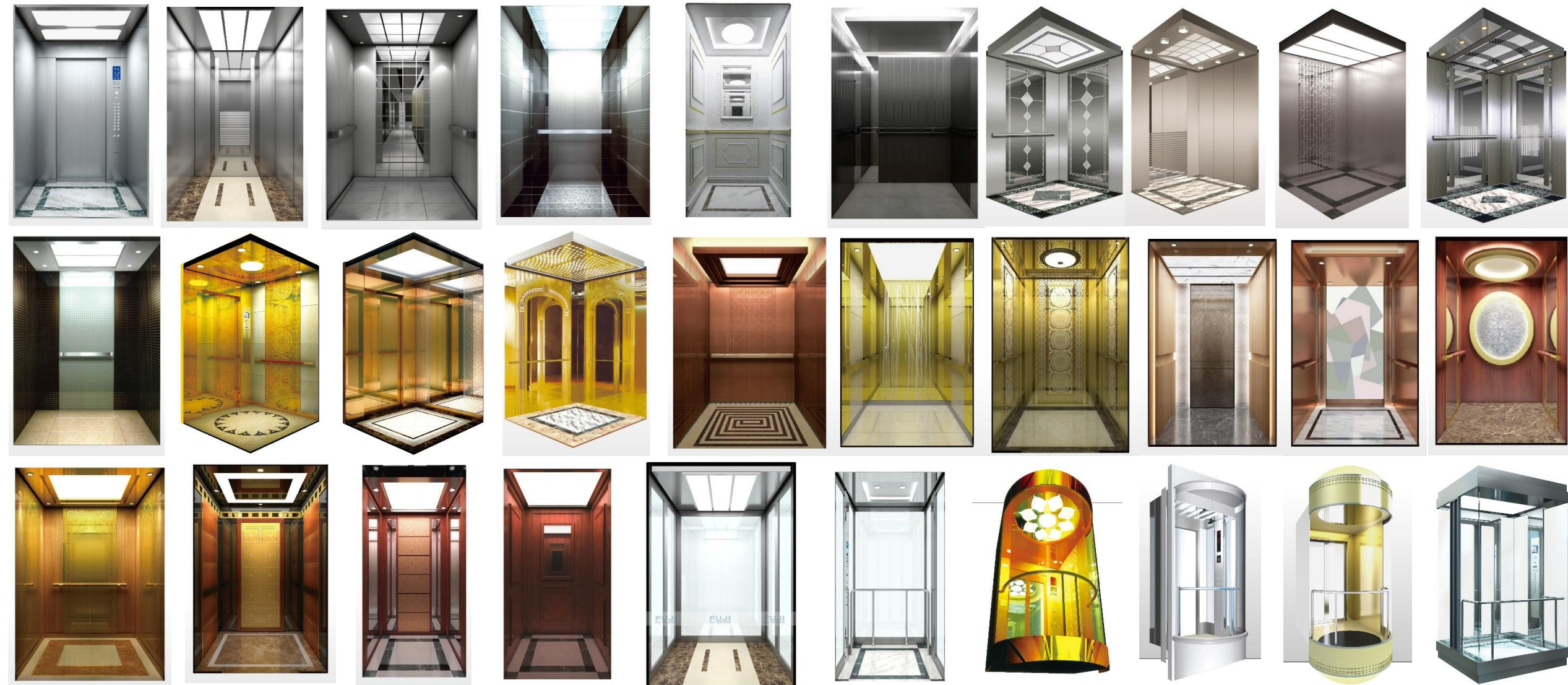


Warehouse

The delivery



# 6. FUJI DESIGNS - Diversified Designs



# 6. FUJI DESIGNS - Diversified Designs



**Material**  
Stainless steel handrail

**No bottom box calling (simplex)**



FJ-X05A

FJ-C05



FJ-C01



HD-COP03  
Touch operation



FJ-C19



FJ-X19A




HD-COP06 HD-COP06A




HD-COP04 HD-COP04A



FJ-C15



FJ-X15A



FJ-C17  
Touch Operation panel



FJ-X17D

**Material**  
Black glass touch operation panel

**Touch calling box(Simplex)**



FJ-X004A



FJ-C04  
Touch Operation Panel



FJ-C18  
Touch Operation panel



FJ-X18A

# Projects



1 Project Location: **Juba, South Sudan**  
Project Name: President's House



2 Project Location: **Karachi, Pakistan**  
Project Name: Mr. Faisal's Cousin  
Elevator: 25 units, 14 Floors 14 Stops



3 Project Location: **Australia**  
Project Name: Wel Shpool  
Elevator: 5 units



4 Project Location: **Brazil**  
Project Name: Brazilian International Airport  
Elevator Specifications: Escalator

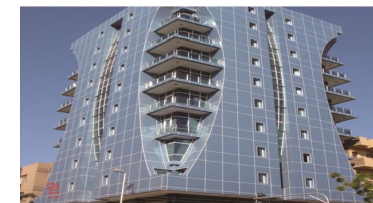
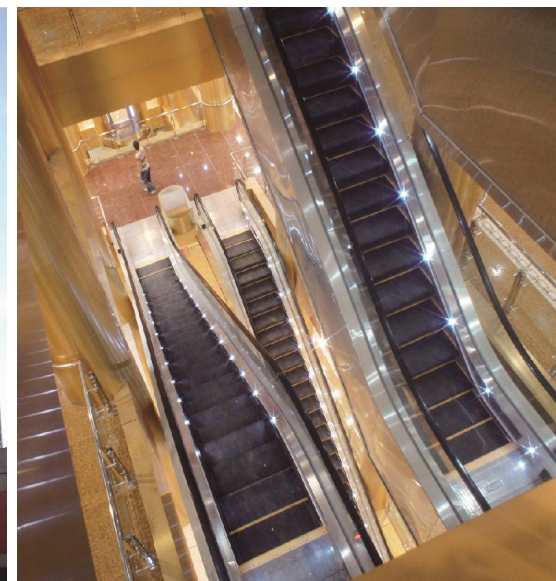


1 Eastern Visayas Regional  
Medical Center - Philippines



2 Wind Playa Salguero - Colombia

The Project Wind Playa Salguero is located in Playa Salguero Santa Marta, an extraordinary location in the Caribbean Sea. Construction area of 15,000 square meters, 22 floors.



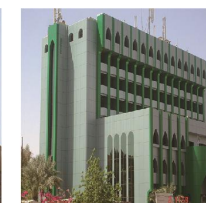
Sudan-Office Building



Karachi-PARADISE TOWER



IRAQ-BAGHDAD-PALESTINE STR





*THANK YOU*